



**Australian
Bureau of
Statistics**

**January 1994
Motor Vehicle Registrations
Australia**

Catalogue No. 9303.0



EMBARGOED UNTIL 11.30 A.M. 9 MARCH 1994

**MOTOR VEHICLE REGISTRATIONS
AUSTRALIA
JANUARY 1994**

IAN CASTLES
Australian Statistician

© Commonwealth of Australia 1994

CONTENTS

Table	Page
.. Summary of Findings	1
1. New motor vehicles by type of vehicle, original, seasonally adjusted and trend estimate: Australia, latest 15 months	3
2. New motor vehicles by type of vehicle: Australia, latest 15 months and previous three years	3
3. New motor vehicles, original, seasonally adjusted and trend estimate: State/Territory, latest 15 months	4
4. New motor vehicles by type of vehicle: State/Territory and capital cities, January 1994	5
5. New plant and equipment, caravans and trailers: State/Territory and capital cities, January 1994	5
6. New motor vehicles by type of vehicle: State/Territory and capital cities, January 1993-94 and 1992-93	5
7. New passenger vehicles by make of vehicle: Australia, January, November and December 1993, and January 1994	6
8. New light commercial vehicles, trucks and buses by make of vehicle: November, December 1993 and January 1994	7
9. New passenger vehicles by make of vehicle: State/Territory and capital cities, January 1994	8
10. New passenger vehicles by selected make and model of vehicle: Australia, January 1994	9
11. New light commercial vehicles by make of vehicle: State/Territory and capital cities, January 1994	10
12. New light commercial vehicles by tare weight and make of vehicle: Australia, January 1994	10
13. New rigid trucks by make of vehicle: State/Territory and capital cities, January 1994	10
14. New rigid trucks by gross vehicle mass and make of vehicle: Australia, January 1994	11
15. New articulated trucks by make of vehicle: State/Territory and capital cities, January 1994	11
16. New articulated trucks by gross combination mass and make of vehicle: Australia, January 1994	11
17. New non-freight carrying trucks by make of vehicle: State/Territory and capital cities, January 1994	12
18. New buses by make of vehicle: State/Territory and capital cities, January 1994	12
19. New buses by tare weight and make of vehicle: Australia, January 1994	12
20. New motor cycles by make of vehicle: State/Territory and capital cities, January 1994	13
21. New motor vehicles by fuel type and type of vehicle: Australia, January 1994	13
22. Number of vehicles on register by type of vehicle, 30 June 1993	13
Chart	
1. Registrations of new motor vehicles.	1
2. Registrations of new motor vehicles by State, percentage change December 1993 - January 1994.	2
3. Registrations of new passenger vehicles by selected makes, January 1994.	2
.. Explanatory Notes	14

INQUIRIES

- for further information about statistics in this publication and the availability of related unpublished statistics, contact Kevin Yeadon on Canberra (06) 252 6255 or any ABS State office.
 - for information about other ABS statistics and services please refer to the back page of this publication.
-



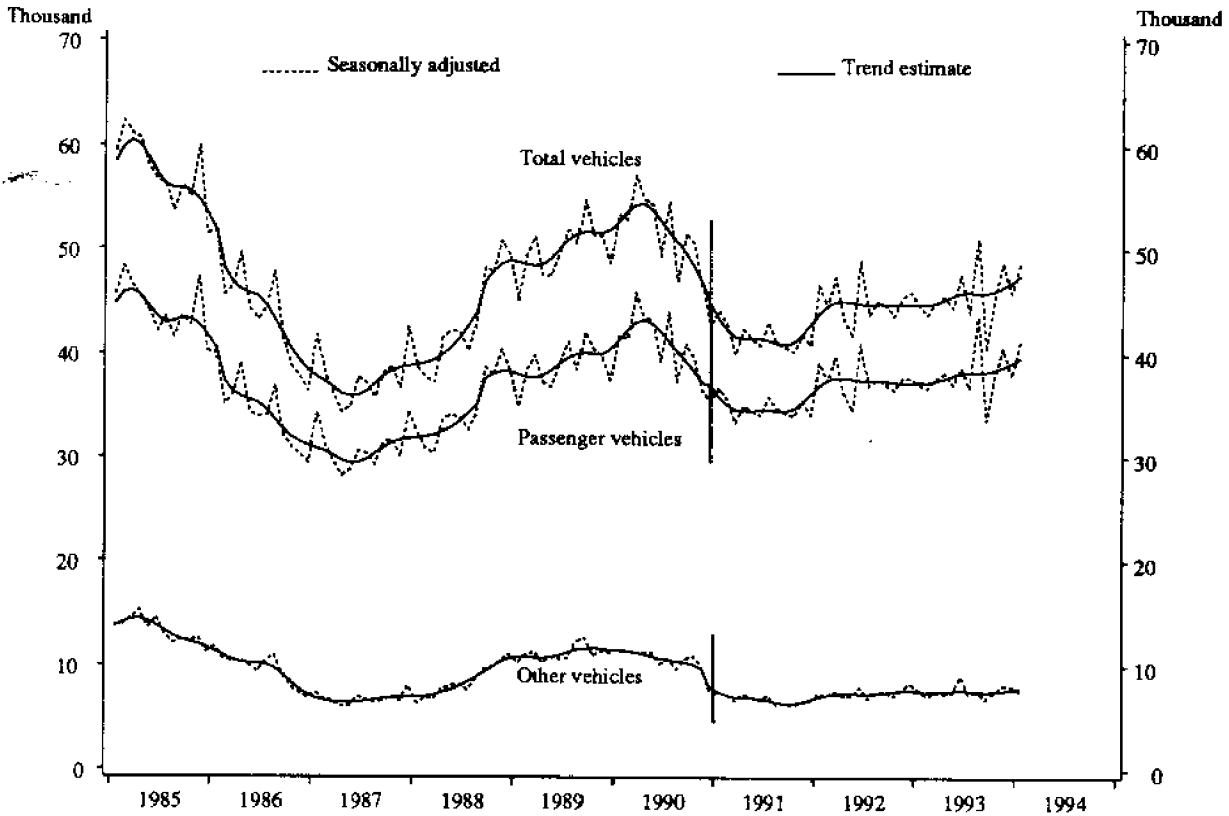
SUMMARY OF FINDINGS

Registrations for the month of January 1994.

The original, seasonally adjusted and trend estimates of total new motor vehicle registrations for January 1993, December 1993 and January 1994 are:

	January 1993	December 1993	January 1994	Jan. 93-Jan. 94 % change	Dec. 93-Jan. 94 % change
Original	33,943	48,536	36,662	8.0	-24.5
Seasonally adjusted	44,746	45,853	48,762	9.0	6.3
Trend	44,868	46,918	47,549	6.0	1.3

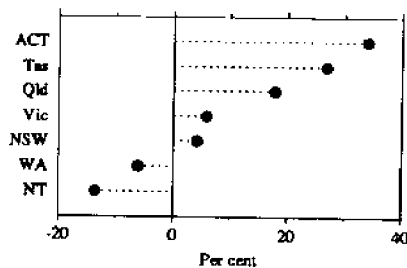
REGISTRATIONS OF NEW MOTOR VEHICLES



A stronger trend is emerging for total new motor vehicle registrations with steady rises since September 1993. With the exception of a small fall in August, passenger vehicle registrations have also been increasing steadily since March 1993 with other vehicles following this trend since October 1993, reversing the consecutive falls in the three previous months.

In seasonally adjusted terms, there was a 6.3 per cent rise over December 1993. This was due to an 8.7 per cent rise in passenger vehicle registrations, offsetting the 4.8 per cent fall in other vehicle registrations.

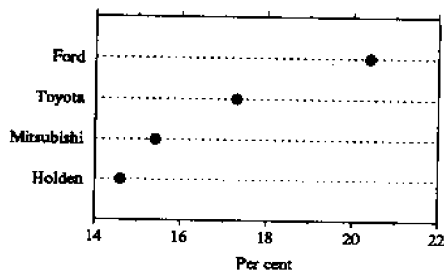
CHART 2: REGISTRATIONS OF NEW MOTOR VEHICLES BY STATE, SEASONALLY ADJUSTED
Percentage change December 1993 - January 1994



Large rises, in seasonally adjusted terms, were recorded in the Australian Capital Territory (34.0%), Tasmania (26.8%) and Queensland (17.7%) while Victoria (5.8%) and New South Wales (4.2%) also recorded increased registrations. The Northern Territory recorded the largest seasonally adjusted fall (13.6%) followed by Western Australia with a drop of 6.1 per cent. South Australia was relatively steady with a small fall of 0.5 per cent.

While unadjusted total motor vehicle registrations for January 1994 fell by 24.5 per cent from December 1993, they exceeded January 1993 by 8.0 per cent. Passenger vehicles fell by 24.0 per cent and other vehicles by 26.9 per cent from December 1993.

CHART 3: REGISTRATIONS OF NEW PASSENGER VEHICLES BY SELECTED MAKES
January 1994



Ford accounted for 20.4 per cent of total new passenger vehicle registrations to lead all makes despite a fall of 4.3 percentage points from December 1993. Toyota recorded 17.3 per cent of the total (down 2 percentage points), while Holden dropped to 14.6 per cent (down 5.1 percentage points). Mitsubishi recorded a rise of 2.8 percentage points to 15.4 per cent.

Despite a fall of 52.0 per cent in registrations from December 1993, Ford Falcon/Fairmont recorded 10.8 per cent of all passenger vehicles registered in January 1994 and led all models with 3,337 registrations. Holden Commodore/Calais recorded 2,911 registrations (or 9.4%), Mitsubishi Magna, 2,687 (or 8.7%) and Toyota Corolla 1,771 (or 5.7%).

TABLE 1. NEW MOTOR VEHICLES BY TYPE OF VEHICLE,
ORIGINAL, SEASONALLY ADJUSTED AND TREND ESTIMATE, AUSTRALIA

Period	Passenger vehicles(a)			Other vehicles(b)			Total(b)		
	Original	Seasonally adjusted	Trend estimate	Original	Seasonally adjusted	Trend estimate	Original	Seasonally adjusted	Trend estimate
<i>1992-93 —</i>									
November	36,812	37,655	37,138	7,744	7,759	7,687	44,556	45,413	44,825
December	41,023	37,646	37,125	8,032	8,317	7,677	49,055	45,962	44,802
January	28,150	37,012	37,250	5,793	7,734	7,618	33,943	44,746	44,869
February	33,376	36,702	37,233	6,522	7,123	7,558	39,898	43,826	44,791
March	42,976	37,600	37,374	8,620	7,402	7,570	51,596	45,002	44,944
April	33,877	38,142	37,659	6,575	7,378	7,629	40,452	45,520	45,288
May	36,865	37,014	37,941	7,937	7,466	7,682	44,802	44,480	45,624
June	42,572	38,672	38,173	10,742	9,022	7,702	53,314	47,694	45,875
<i>1993-94 —</i>									
July	37,719	36,722	38,247	7,720	7,290	7,670	45,439	44,012	45,917
August	45,126	43,620	38,239	7,325	7,533	7,600	52,451	51,153	45,839
September	35,681	33,575	38,287	6,865	6,873	7,555	42,546	40,449	45,842
October	37,162	37,929	38,467	7,524	7,528	7,578	44,686	45,457	46,045
November	41,662	40,637	38,778	8,446	8,176	7,659	50,108	48,813	46,436
December	40,746	37,870	39,179	7,790	7,983	7,738	48,536	45,853	46,918
January	30,967	41,163	39,659	5,695	7,599	7,890	36,662	48,762	47,549

(a) See paragraph 12 of the Explanatory Notes. (b) Excludes motor cycles, plant and equipment, caravans and trailers.

TABLE 2. NEW MOTOR VEHICLES BY TYPE OF VEHICLE, AUSTRALIA

Period	Passenger vehicles(a)	Light commercial vehicles(a)	Trucks			Buses	Total (excludes motor cycles)	Motor cycles
			Rigid	Articulated	Non-freight carrying			
1990-91	440,713	72,364	20,861	2,119	1,325	4,823	542,196	19,537
1991-92	437,055	67,825	9,925	1,742	785	3,855	521,186	16,675
1992-93	449,786	74,808	9,777	2,199	708	4,230	541,508	17,513
<i>1992-93 —</i>								
November	36,812	6,292	873	173	61	345	44,556	1,457
December	41,023	6,451	964	174	74	369	49,055	1,555
January	28,150	4,804	502	137	35	315	33,943	1,509
February	33,376	5,392	628	113	35	354	39,898	1,604
March	42,976	7,163	827	213	57	360	51,596	1,740
April	33,877	5,285	735	194	44	317	40,452	1,483
May	36,865	6,467	819	222	56	373	44,802	1,287
June	42,572	8,879	982	293	68	520	53,314	1,326
<i>1993-94 —</i>								
July	37,719	6,275	809	206	88	342	45,439	1,250
August	45,126	5,862	807	237	99	320	52,451	1,417
September	35,681	5,558	771	222	64	250	42,546	1,353
October	37,162	6,093	824	262	64	281	44,686	1,323
November	41,662	6,948	811	302	78	307	50,108	1,811
December	40,746	6,309	851	254	70	306	48,536	1,543
January	30,967	4,686	508	176	23	302	36,662	1,481

(a) See paragraphs 12 and 13 of the Explanatory Notes.

TABLE 3. NEW MOTOR VEHICLES(a), ORIGINAL, SEASONALLY ADJUSTED AND TREND ESTIMATE

Period	NSW			Vic.			Qld		
	Original	Seasonally adjusted	Trend estimate	Original	Seasonally adjusted	Trend estimate	Original	Seasonally adjusted	Trend estimate
<i>1992-93 —</i>									
November	16,549	16,315	15,394	9,603	9,989	10,372	8,332	9,023	8,680
December	16,284	16,138	15,504	11,307	10,557	10,327	9,433	8,430	8,665
January	11,341	14,921	15,728	7,534	10,388	10,286	7,046	9,166	8,626
February	14,313	15,830	15,765	9,234	9,905	10,259	7,414	8,245	8,589
March	18,925	16,073	15,758	11,133	10,031	10,297	10,362	8,872	8,665
April	13,784	16,155	15,746	10,120	10,749	10,367	7,272	8,392	8,792
May	16,263	15,055	15,700	10,286	10,410	10,429	8,121	8,404	8,926
June	18,029	15,879	15,658	11,660	10,584	10,440	11,235	9,943	9,057
<i>1993-94 —</i>									
July	15,148	14,696	15,611	10,784	10,230	10,428	9,123	8,760	9,089
August	18,495	17,972	15,635	11,622	11,085	10,424	10,169	10,434	9,027
September	14,304	13,994	15,776	9,894	9,436	10,483	7,921	7,114	8,916
October	14,487	15,201	15,979	10,629	10,698	10,629	9,397	9,324	8,835
November	18,628	17,506	16,205	11,248	11,242	10,821	8,585	8,971	8,834
December	16,130	16,178	16,433	11,608	10,849	11,021	9,421	8,318	8,891
January	12,896	16,857	16,676	8,173	11,479	11,218	7,373	9,788	9,039
<i>SA</i>									
<i>WA</i>									
<i>Tas.</i>									
Period	Original	Seasonally adjusted	Trend estimate	Original	Seasonally adjusted	Trend estimate	Original	Seasonally adjusted(b)	Trend estimate
	Original	Seasonally adjusted	Trend estimate	Original	Seasonally adjusted	Trend estimate	Original	Seasonally adjusted(b)	Trend estimate
<i>1992-93 —</i>									
November	3,193	3,113	3,235	4,556	4,628	4,758	905	956	1,039
December	3,718	3,493	3,197	5,284	4,977	4,724	1,633	996	1,017
January	2,323	3,141	3,157	3,973	4,713	4,683	765	1,053	1,009
February	2,657	2,920	3,127	4,325	4,632	4,657	757	912	1,009
March	3,419	3,041	3,128	5,053	4,537	4,672	1,076	1,036	1,028
April	2,868	3,165	3,164	4,290	4,607	4,744	924	1,119	1,058
May	3,170	3,326	3,205	4,523	4,691	4,835	989	1,091	1,082
June	3,582	3,299	3,228	6,009	5,458	4,918	1,078	1,078	1,097
<i>1993-94 —</i>									
July	3,187	3,164	3,221	4,625	4,619	4,972	992	1,008	1,104
August	3,549	3,347	3,177	5,595	5,438	4,983	1,300	1,365	1,099
September	3,141	2,907	3,124	4,744	4,700	4,968	985	823	1,088
October	3,068	3,009	3,087	4,581	4,608	4,955	1,065	1,117	1,076
November	3,490	3,214	3,066	5,361	5,195	4,961	1,233	1,249	1,061
December	3,172	3,046	3,052	5,470	5,196	4,972	1,332	854	1,047
January	2,239	3,031	3,046	4,078	4,861	5,017	766	1,083	1,034
<i>NT</i>									
<i>ACT</i>									
<i>Australia</i>									
Period	Original	Seasonally adjusted(b)	Trend estimate	Original	Seasonally adjusted(b)	Trend estimate	Original	Seasonally adjusted	Trend estimate
	Original	Seasonally adjusted(b)	Trend estimate	Original	Seasonally adjusted(b)	Trend estimate	Original	Seasonally adjusted	Trend estimate
<i>1992-93 —</i>									
November	502	522	489	916	868	860	44,556	45,413	44,825
December	459	488	485	937	883	884	49,055	45,962	44,802
January	305	438	476	656	925	903	33,943	44,746	44,869
February	367	443	475	831	940	909	39,898	43,826	44,791
March	571	477	485	1,057	936	910	51,596	45,002	44,944
April	486	511	501	708	822	917	40,452	45,520	45,288
May	546	528	512	904	976	935	44,802	44,480	45,624
June	699	554	514	1,022	899	963	53,314	47,694	45,875
<i>1993-94 —</i>									
July	555	528	507	1,025	1,008	985	45,439	44,012	45,917
August	462	429	498	1,259	1,082	995	52,451	51,153	45,839
September	473	467	491	1,084	1,007	997	42,546	40,449	45,842
October	486	493	487	973	1,008	996	44,686	45,457	46,045
November	548	546	484	1,015	889	1,005	50,108	48,813	46,436
December	448	487	478	955	927	1,024	48,536	45,853	46,918
January	299	421	474	838	1,242	1,044	36,662	48,762	47,549

(a) Excludes motor cycles, plant and equipment, caravans and trailers. (b) See paragraph 18 of the Explanatory Notes.

TABLE 4. REGISTRATIONS OF NEW MOTOR VEHICLES BY TYPE OF VEHICLE, JANUARY 1994

Type of vehicle	NSW	Vic.	Qld	SA	WA	Tas.	NT	ACT	Australia	Capital cities (a)
Passenger vehicles	11,206	7,148	5,779	1,940	3,311	623	207	753	30,967	22,029
Light commercial vehicles	1,398	806	1,343	257	630	123	64	65	4,686	2,320
Trucks —										
Rigid	134	109	162	17	60	13	7	6	508	314
Articulated	44	49	40	14	25	3	—	1	176	66
Non-freight carrying	3	6	3	2	6	—	3	—	23	16
Buses	111	55	46	9	46	4	18	13	302	161
Total (excl. motor cycles)	12,896	8,173	7,373	2,239	4,078	766	299	838	36,662	24,906
Capital cities(a)	8,975	6,229	3,605	1,767	3,121	371	..	838	24,906	24,906
Other areas	3,921	1,944	3,768	472	957	395	299	..	11,756	..
Motor cycles	424	411	326	93	172	25	15	15	1,481	866

(a) See paragraph 23 of the Explanatory Notes.

TABLE 5. REGISTRATIONS OF NEW PLANT AND EQUIPMENT, CARAVANS AND TRAILERS, JANUARY 1994

Type of vehicle	NSW	Vic.	Qld	SA	WA	Tas.	NT	ACT	Australia	Capital cities (a)
Plant and equipment(b)	56	58	62	13	60	12	—	3	264	122
Caravans(c)	49	72	43	19	57	3	—	—	243	131
Trailers	1,127	888	1,187	486	744	161	51	53	4,697	2,512
Total	1,232	1,018	1,292	518	861	176	51	56	5,204	2,765

(a) See paragraph 23 of the Explanatory Notes. (b) See paragraph 8 of the Explanatory Notes. (c) Excludes self-propelled caravans.

TABLE 6. REGISTRATIONS OF NEW MOTOR VEHICLES BY TYPE OF VEHICLE, SEVEN MONTHS ENDED JANUARY 1994

Type of vehicle	NSW	Vic.	Qld	SA	WA	Tas.	NT	ACT	Australia	Capital cities (a)
Passenger vehicles	94,441	64,028	48,646	18,882	28,023	6,374	2,169	6,500	269,063	194,955
Light commercial vehicles	12,612	7,856	11,036	2,497	5,284	1,086	813	547	41,731	21,190
Trucks —										
Rigid	1,819	1,156	1,392	195	595	90	78	56	5,381	3,512
Articulated	432	503	379	134	134	48	22	7	1,659	716
Non-freight carrying	202	76	78	46	41	27	13	3	486	349
Buses	582	339	458	92	377	48	176	36	2,108	1,156
Total (excl. motor cycles)										
— 7 months ended January										
1994	110,088	73,958	61,989	21,846	34,454	7,673	3,271	7,149	320,428	221,878
1993	107,332	71,457	59,999	22,775	32,920	7,784	3,142	6,037	311,446	215,489
Capital cities(a)	77,206	56,749	32,443	17,400	27,168	3,763	..	7,149	221,878	221,878
Other areas	32,882	17,209	29,546	4,446	7,286	3,910	3,271	..	98,550	..
Motor cycles										
— 7 months ended January										
1994	2,967	2,570	1,993	873	1,234	260	162	119	10,178	5,722
1993	2,551	2,693	2,157	879	1,263	205	191	134	10,073	5,199

(a) See paragraph 23 of the Explanatory Notes.

TABLE 7. REGISTRATION OF NEW PASSENGER VEHICLES BY MAKE OF VEHICLE, AUSTRALIA

<i>Make</i>	<i>Nov. 1993</i>	<i>Dec. 1993</i>	<i>Jan. 1994</i>	<i>Jan. 1993</i>
Alfa Romeo	—	—	—	7
Asia	24	15	14	—
Audi	129	100	117	65
Bentley	1	2	3	1
B.M.W.	423	457	483	347
Chevrolet	1	2	2	—
Citroen	7	2	4	5
Daihatsu	1,377	1,088	961	1,018
Eunos	122	105	88	87
Ferrari	—	—	—	4
Ford	8,925	10,054	6,322	4,481
FSM	—	—	—	10
Holden	8,411	8,029	4,531	4,125
Honda	1,247	1,077	1,418	1,189
Hyundai	1,483	1,589	1,602	977
Jaguar	21	9	14	13
Lada	23	45	48	40
Land Rover	294	369	253	122
Lexus	63	64	47	77
Maserati	1	1	2	1
Mazda	1,525	1,493	1,472	2,125
Mercedes-Benz	215	163	244	232
Mitsubishi	5,235	5,139	4,771	4,400
Nissan	1,748	1,899	1,674	1,722
Peugeot	98	67	92	60
Porsche	16	12	9	11
Range Rover	82	71	49	40
Renault	70	59	28	39
Rolls Royce	—	2	1	—
Saab	230	172	148	235
Subaru	580	386	436	687
Suzuki	482	439	557	715
Toyota	8,495	7,446	5,348	5,156
Volkswagen	63	46	33	1
Volvo	245	267	165	156
Other and unknown	26	77	31	2
Total	41,662	40,746	30,967	28,150

TABLE 8. REGISTRATIONS OF NEW LIGHT COMMERCIAL VEHICLES, TRUCKS, AND BUSES BY MAKE OF VEHICLE, AUSTRALIA

Make	Nov. 1993	Dec. 1993	Jan. 1994				Buses	Total
	Total	Total	Light commercial vehicles	Trucks				
				Rigid	Articulated	Non-freight carrying		
Chevrolet	—	2	—	—	—	—	—	
Daihatsu	57	69	30	18	—	—	48	
Ford	1,238	1,115	812	41	18	8	879	
Freight Liner	28	24	—	1	15	—	16	
Hino	103	102	—	43	—	2	36	
Holden	1,310	1,020	730	—	—	1	731	
Hyundai	47	37	38	—	—	—	38	
International	115	121	—	32	29	1	62	
Isuzu	225	240	—	131	1	1	12	
Kenworth	71	64	—	3	33	—	36	
Land Rover	31	44	27	—	—	—	27	
Mack	30	35	—	2	19	1	22	
Man	12	6	—	1	2	—	4	
Mazda	355	362	313	49	—	3	9	
MCA	2	1	—	—	—	—	2	
Mercedes-Benz	36	25	—	8	3	—	36	
Mitsubishi	887	795	635	83	2	1	721	
Nissan	390	461	431	—	—	—	3	
Nissan UD	39	23	—	20	3	1	1	
Oka	4	13	—	—	—	—	1	
Renault	1	—	—	—	—	—	—	
Scania	47	32	—	2	7	1	9	
Subaru	51	43	31	—	—	—	—	
Suzuki	25	23	13	—	—	—	—	
Toyota	3,215	3,028	1,592	60	—	3	188	
Volkswagen	45	29	27	—	—	—	—	
Volvo	54	55	—	14	21	—	1	
Western Star	20	16	—	—	22	—	—	
Other and unknown	8	5	7	—	1	—	—	
Total	8,446	7,790	4,686	508	176	23	302	5,695

TABLE 9. REGISTRATIONS OF NEW PASSENGER VEHICLES BY MAKE OF VEHICLE,
JANUARY 1994

<i>Make</i>	<i>NSW</i>	<i>Vic.</i>	<i>Qld</i>	<i>SA</i>	<i>WA</i>	<i>Tas.</i>	<i>NT</i>	<i>ACT</i>	<i>Australia</i>	<i>Capital cities (a)</i>
Asia	7	1	4	—	—	1	1	—	14	5
Audi	65	30	8	4	6	2	—	2	117	109
Bentley	2	—	—	—	1	—	—	—	3	3
B.M.W.	192	149	76	27	25	4	1	9	483	391
Chevrolet	2	—	—	—	—	—	—	—	2	2
Citroen	1	3	—	—	—	—	—	—	4	3
Daihatsu	450	100	173	60	152	8	2	16	961	650
Eunos	44	16	12	4	9	2	—	1	88	83
Ford	2,166	1,489	1,220	494	626	115	41	171	6,322	4,141
Holden	1,589	946	952	300	482	110	25	127	4,531	3,290
Honda	507	464	206	58	134	27	7	15	1,418	1,157
Hyundai	531	297	258	59	359	40	20	38	1,602	1,107
Jaguar	9	3	—	—	1	1	—	—	14	13
Lada	4	8	3	3	29	—	1	—	48	42
Land Rover	80	58	54	15	32	9	1	4	253	154
Lexus	24	6	9	—	6	—	—	2	47	41
Maserati	—	—	2	—	—	—	—	—	2	1
Mazda	581	369	245	78	127	25	9	38	1,472	1,171
Mercedes-Benz	103	84	27	10	14	—	—	6	244	214
Mitsubishi	1,495	1,313	861	411	438	102	24	127	4,771	3,491
Nissan	535	413	345	100	181	45	16	39	1,674	1,124
Peugeot	42	31	8	3	4	3	—	1	92	71
Porsche	2	3	—	2	1	1	—	—	9	9
Range Rover	31	5	8	1	2	2	—	—	49	39
Renault	14	5	4	3	1	—	—	1	28	23
Rolls Royce	1	—	—	—	—	—	—	—	1	1
Saab	59	60	5	5	15	1	1	2	148	132
Subaru	170	93	64	32	60	9	2	6	436	311
Suzuki	241	47	94	38	111	7	5	14	557	397
Toyota	2,164	1,084	1,117	226	473	103	50	131	5,348	3,662
Volkswagen	18	9	—	1	3	1	1	—	33	28
Volvo	77	31	24	6	19	5	—	3	165	134
Other and unknown	—	31	—	—	—	—	—	—	31	30
Total	11,206	7,148	5,779	1,940	3,311	623	207	753	30,967	22,029

(a) See paragraph 23 of the Explanatory Notes.

TABLE 10. REGISTRATIONS OF PASSENGER VEHICLES BY SELECTED
MAKE AND MODEL OF VEHICLE,
JANUARY 1994

<i>Make/Model</i>	<i>NSW</i>	<i>Vic.</i>	<i>Qld</i>	<i>SA</i>	<i>WA</i>	<i>Tas.</i>	<i>NT</i>	<i>ACT</i>	<i>Australia</i>
Ford									
Falcon/Fairmont	1,093	823	707	234	325	47	20	88	3,337
Laser	473	308	178	105	99	29	12	37	1,241
Festiva	371	117	191	80	132	28	7	29	955
Other	229	241	144	75	70	11	2	17	789
Total	2,166	1,489	1,220	494	626	115	41	171	6,322
Holden									
Commodore/Calais	1,021	678	610	170	258	55	19	100	2,911
Barina	341	129	199	78	114	26	4	14	905
Apollo	116	73	88	19	62	14	0	6	378
Other	111	66	55	33	48	15	2	7	337
Total	1,589	946	952	300	482	110	25	127	4,531
Hyundai									
Excel	323	233	199	40	305	25	13	15	1,153
Lantra	125	15	25	9	24	5	3	13	219
Sonata	69	29	24	7	23	7	4	8	171
Other	14	20	10	3	7	3	0	2	59
Total	531	297	258	59	359	40	20	38	1,602
Mazda									
626	174	125	80	21	41	4	1	10	456
121	181	99	70	28	38	14	5	17	452
323	158	108	68	24	37	7	3	8	413
Other	68	37	27	5	11	0	0	3	151
Total	581	369	245	78	127	25	9	38	1,472
Mitsubishi									
Magna	764	799	452	274	247	54	14	83	2,687
Lancer	307	235	154	65	78	16	4	25	884
Pajero	229	138	169	34	65	23	2	6	666
Other	195	141	86	38	48	9	4	13	534
Total	1,495	1,313	861	411	438	102	24	127	4,771
Nissan									
Pulsar	281	174	147	47	64	35	3	21	772
Patrol	90	110	91	27	73	5	11	2	409
Bluebird	101	71	64	16	24	5	1	11	293
Other	63	58	43	10	20	0	1	5	200
Total	535	413	345	100	181	45	16	39	1,674
Toyota									
Corolla	765	338	374	69	124	43	11	47	1,771
Camry	525	287	267	60	105	26	21	42	1,333
Landcruiser	272	188	211	43	128	17	13	14	886
Other	602	271	265	54	116	17	5	28	1,358
Total	2,164	1,084	1,117	226	473	103	50	131	5,348

TABLE 11. REGISTRATIONS OF NEW LIGHT COMMERCIAL VEHICLES BY MAKE OF VEHICLE, JANUARY 1994

Make	NSW	Vic.	Qld	SA	WA	Tas.	NT	ACT	Australia	Capital cities (a)
Daihatsu	10	2	11	3	4	—	—	—	30	13
Ford	245	203	182	55	89	11	6	21	812	459
Holden	265	118	183	36	108	11	3	6	730	405
Hyundai	18	3	4	—	8	2	3	—	38	28
Land Rover	11	2	8	1	5	—	—	—	27	10
Mazda	71	62	87	16	54	15	1	7	313	174
Mitsubishi	184	99	201	51	57	19	15	9	635	347
Nissan	88	89	123	26	81	17	4	3	431	160
Subaru	20	8	1	1	1	—	—	—	31	3
Suzuki	5	—	1	2	2	3	—	—	13	1
Toyota	464	215	539	66	214	45	30	19	1,592	693
Volkswagen	17	4	1	—	4	—	1	—	27	23
Other and unknown	—	1	2	—	3	—	1	—	7	4
Total	1,398	806	1,343	257	630	123	64	65	4,686	2,320

(a) See paragraph 23 of the Explanatory Notes.

TABLE 12. REGISTRATIONS OF NEW LIGHT COMMERCIAL VEHICLES BY TARE WEIGHT AND MAKE OF VEHICLE, AUSTRALIA, JANUARY 1994

Make	Tare weight (kg)						Total
	900 and under	901 to 1100	1101 to 1300	1301 to 1500	Over 1500	Not stated	
Daihatsu	24	1	—	1	4	—	30
Ford	24	3	117	552	97	19	812
Holden	20	—	113	397	180	20	730
Hyundai	—	33	—	—	—	5	38
Land Rover	—	—	—	—	27	—	27
Mazda	7	1	54	150	81	20	313
Mitsubishi	15	23	339	122	93	43	635
Nissan	7	2	45	150	198	29	431
Subaru	2	28	—	—	1	—	31
Suzuki	5	5	—	—	—	3	13
Toyota	36	33	397	345	700	81	1,592
Volkswagen	—	1	—	19	6	1	27
Other and unknown	1	—	—	4	1	1	7
Total	141	130	1,065	1,740	1,388	222	4,686

TABLE 13. REGISTRATIONS OF NEW RIGID TRUCKS BY MAKE OF VEHICLE, JANUARY 1994

Make	NSW	Vic.	Qld	SA	WA	Tas.	NT	ACT	Australia	Capital cities (a)
Daihatsu	11	2	3	—	2	—	—	—	18	11
Ford	6	7	21	2	4	1	—	—	41	21
Freight Liner	—	—	1	—	—	—	—	—	1	1
Hino	11	10	8	3	9	—	2	—	43	31
International	6	7	14	1	3	—	—	1	32	22
Isuzu	34	23	45	4	19	4	1	1	131	94
Kenworth	2	1	—	—	—	—	—	—	3	—
Mack	—	1	—	—	1	—	—	—	2	1
Man	—	—	—	—	1	—	—	—	1	—
Mazda	13	19	9	—	8	—	—	—	49	40
Mercedes-Benz	2	4	2	—	—	—	—	—	8	5
Mitsubishi	29	16	15	5	11	6	1	—	83	38
Nissan UD	9	5	5	—	—	—	1	—	20	5
Scania	1	—	1	—	—	—	—	—	2	1
Toyota	5	13	34	1	2	1	—	4	60	38
Volvo	5	1	4	1	—	1	2	—	14	6
Total	134	109	162	17	60	13	7	6	508	314

(a) See paragraph 23 of the Explanatory Notes.

TABLE 14. REGISTRATIONS OF NEW RIGID TRUCKS BY GROSS VEHICLE MASS AND MAKE OF VEHICLE, AUSTRALIA, JANUARY 1994

Make	Gross vehicle mass (tonnes)							Total
	4 and under	Over 4 to 8	Over 8 to 12	Over 12 to 16	Over 16 to 20	Over 20	Not stated	
Daihatsu	7	10	1	—	—	—	—	18
Ford	2	26	3	1	—	9	—	41
Freight Liner	—	—	—	—	—	1	—	1
Hino	—	—	15	16	3	9	—	43
International	—	—	—	15	3	12	2	32
Isuzu	—	43	41	35	2	7	3	131
Kenworth	—	—	—	1	—	2	—	3
Mack	—	—	—	—	—	2	—	2
Man	—	—	—	—	—	1	—	1
Mazda	—	28	8	11	—	—	—	49
Mercedes-Benz	—	—	2	3	2	1	—	8
Mitsubishi	—	39	13	19	2	7	3	83
Nissan UD	—	—	5	11	2	1	1	20
Scania	—	—	—	—	—	2	—	2
Toyota	10	35	9	1	—	—	—	60
Volvo	—	—	—	2	1	9	2	14
Total	19	181	97	115	15	63	18	508

TABLE 15. REGISTRATIONS OF NEW ARTICULATED TRUCKS BY MAKE OF VEHICLE, JANUARY 1994

Make	NSW	Vic.	Qld	SA	WA	Tas.	NT	ACT	Australia	Capital cities (a)
Ford	10	4	2	1	1	—	—	—	18	3
Freight Liner	6	3	5	—	1	—	—	—	15	11
International	5	16	2	4	1	1	—	—	29	5
Isuzu	—	—	1	—	—	—	—	—	1	1
Kenworth	7	9	13	—	3	—	—	1	33	9
Mack	2	5	3	5	3	1	—	—	19	6
Man	—	—	—	1	1	—	—	—	2	1
Mercedes-Benz	—	—	1	—	1	1	—	—	3	2
Mitsubishi	—	1	—	1	—	—	—	—	2	—
Nissan UD	1	—	—	—	2	—	—	—	3	2
Scania	—	4	2	1	—	—	—	—	7	4
Volvo	6	3	1	—	11	—	—	—	21	13
Western Star	7	4	10	—	1	—	—	—	22	9
Other and unknown	—	—	—	1	—	—	—	—	1	—
Total	44	49	40	14	25	3	—	1	176	66

(a) See paragraph 23 of the Explanatory Notes.

TABLE 16. REGISTRATIONS OF NEW ARTICULATED TRUCKS BY GROSS COMBINATION MASS AND MAKE OF VEHICLE, AUSTRALIA, JANUARY 1994

Make	Gross combination mass (tonnes)						Total
	24 and under	Over 24 to 30	Over 30 to 34	Over 34 to 40	Over 40	Not stated	
Ford	—	—	—	—	9	9	18
Freight Liner	—	—	—	—	7	8	15
International	—	—	—	—	12	17	29
Isuzu	—	—	1	—	—	—	1
Kenworth	—	—	—	—	—	—	—
Mack	—	2	—	—	15	16	33
Man	—	—	—	—	8	11	19
Mercedes-Benz	—	—	—	—	1	1	2
Mitsubishi	—	—	—	—	2	1	3
Nissan UD	—	—	—	—	1	1	2
Scania	—	—	—	—	—	2	3
Volvo	—	—	—	—	5	2	7
Western Star	—	—	1	—	9	11	21
Other and unknown	—	—	—	—	12	10	22
Total	—	3	2	—	82	89	176

TABLE 17. REGISTRATIONS OF NEW NON-FREIGHT CARRYING TRUCKS BY MAKE OF VEHICLE, JANUARY 1994

<i>Make</i>	<i>NSW</i>	<i>Vic.</i>	<i>Qld</i>	<i>SA</i>	<i>WA</i>	<i>Tas.</i>	<i>NT</i>	<i>ACT</i>	<i>Australia</i>	<i>Capital cities (a)</i>
Ford	1	2	—	1	2	—	2	—	8	6
Hino	—	—	1	1	—	—	—	—	2	1
Holden	—	—	—	—	1	—	—	—	1	1
International	—	—	1	—	—	—	—	—	1	1
Isuzu	—	—	—	—	—	—	1	—	1	—
Mack	—	—	1	—	—	—	—	—	1	—
Mazda	1	1	—	—	1	—	—	—	3	2
Mitsubishi	—	1	—	—	—	—	—	—	1	1
Nissan UD	—	1	—	—	—	—	—	—	1	1
Scania	—	1	—	—	—	—	—	—	1	1
Toyota	1	—	—	—	2	—	—	—	3	2
Total	3	6	3	2	6	—	3	—	23	16

(a) See paragraph 23 of the Explanatory Notes.

TABLE 18. REGISTRATIONS OF NEW BUSES BY MAKE OF VEHICLE, JANUARY 1994

<i>Make</i>	<i>NSW</i>	<i>Vic.</i>	<i>Qld</i>	<i>SA</i>	<i>WA</i>	<i>Tas.</i>	<i>NT</i>	<i>ACT</i>	<i>Australia</i>	<i>Capital cities (a)</i>
Hino	23	11	—	—	2	—	—	—	36	12
Isuzu	12	—	—	—	—	—	—	—	12	1
Man	1	1	—	2	—	—	—	—	4	3
Mazda	1	6	2	—	—	—	—	—	9	8
MCA	2	—	—	—	—	—	—	—	2	1
Mercedes-Benz	18	5	1	—	1	—	11	—	36	8
Nissan	1	—	—	—	2	—	—	—	3	3
Nissan UD	1	—	—	—	—	—	—	—	1	—
Oka	—	—	—	—	—	—	1	—	1	—
Scania	5	3	—	—	—	1	—	—	9	8
Toyota	46	29	43	7	41	3	6	13	188	117
Volvo	1	—	—	—	—	—	—	—	1	—
Total	111	55	46	9	46	4	18	13	302	161

(a) See paragraph 23 of the Explanatory Notes.

TABLE 19. REGISTRATIONS OF NEW BUSES BY TARE WEIGHT AND MAKE OF VEHICLE, AUSTRALIA, JANUARY 1994

<i>Make</i>	<i>Tare weight (kg)</i>					<i>Total</i>
	<i>1500 and under</i>	<i>1501 to 5000</i>	<i>5001 to 10000</i>	<i>Over 10000</i>	<i>Not stated</i>	
Hino	—	1	34	1	—	36
Isuzu	—	1	11	—	—	12
Man	—	—	—	4	—	4
Mazda	—	9	—	—	—	9
MCA	—	—	—	2	—	2
Mercedes-Benz	—	2	22	1	11	36
Nissan	—	3	—	—	—	3
Nissan UD	—	—	1	—	—	1
Oka	—	—	—	—	1	1
Scania	—	—	3	5	1	9
Toyota	2	168	—	—	18	188
Volvo	—	—	—	1	—	1
Total	2	184	71	14	31	302

TABLE 20. REGISTRATIONS OF NEW MOTOR CYCLES BY MAKE OF VEHICLE, JANUARY 1994

Make	NSW	Vic.	Qld	SA	WA	Tas.	NT	ACT	Australia	Capital cities (a)
B.M.W.	12	23	7	11	2	3	—	1	59	38
Cagiva	1	—	1	—	—	—	—	—	2	1
Ducati	3	2	1	3	3	1	1	—	14	8
Harley-Davidson	71	66	58	23	47	6	2	4	277	159
Honda	168	138	121	22	36	9	2	4	500	354
Husqvarna	6	1	2	—	—	—	—	—	9	5
Kawasaki	57	78	31	13	28	2	2	5	216	117
K.T.M.	5	4	3	—	1	—	2	—	15	4
Moto Guzzi	3	3	5	1	2	—	—	—	14	4
Suzuki	41	43	24	9	17	1	4	1	140	80
Triumph	3	5	5	2	4	1	—	—	20	13
Yamaha	54	48	68	9	31	2	2	—	214	82
Other and unknown	—	—	—	—	1	—	—	—	1	1
Total	424	411	326	93	172	25	15	15	1,481	866

(a) See paragraph 23 of the Explanatory Notes.

TABLE 21. REGISTRATIONS OF NEW MOTOR VEHICLES BY FUEL TYPE AND TYPE OF VEHICLE, AUSTRALIA, JANUARY 1994

Type of Vehicle	Fuel type				Total
	Petrol	Diesel	Gas	Other (incl. dual fuel)	
Passenger vehicles	30,100	805	6	56	30,967
Light commercial vehicles	3,192	1,468	3	23	4,686
Trucks —					
Rigid	32	476	—	—	508
Articulated	3	173	—	—	176
Non-freight carrying	12	11	—	—	23
Buses	43	258	—	1	302
Total (excl. motor cycles)	33,382	3,191	9	80	36,662
Motor Cycles	1,481	—	—	—	1,481

TABLE 22. NUMBER OF VEHICLES ON REGISTER, BY TYPE OF VEHICLE, 30 JUNE 1993 ('000)

Type of Vehicle	NSW(a)	Vic.	Qld	SA	WA	Tas.	NT	ACT	Australia (a)
Passenger Vehicles	2,483.3	2,206.6	1,393.6	731.9	803.7	231.8	52.2	146.8	8,050.0
Light Commercial Vehicles	538.2	324.9	348.0	95.5	153.3	48.3	23.6	16.9	1,548.7
Trucks —									
Rigid	107.7	74.2	55.2	34.4	91.1	(d)21.3	2.3	2.3	(d)388.5
Articulated	14.1	14.6	10.7	4.7	5.8	(d)	0.9	0.3	(d)51.0
Non-freight carrying	8.4	11.7	8.8	7.1	9.3	0.7	0.1	0.8	46.8
Buses	10.1	15.9	11.5	3.4	9.9	2.1	0.7	1.3	54.9
Total motor vehicles(b)	3,161.8	2,648.0	1,827.6	876.9	1,073.1	304.1	79.9	168.3	10,139.8
Motor cycles	—	73.2	70.4	67.3	27.7	37.9	6.6	3.8	291.7
Plant and equipment(c)	—	25.6	74.0	34.0	9.7	31.2	4.1	1.5	181.2
Caravans	—	55.3	96.3	39.6	33.7	36.1	5.3	0.7	268.4
Trailers	—	485.6	330.0	350.3	185.1	207.5	57.5	15.2	1,652.1
Total other vehicles	639.6	570.8	491.2	256.2	312.7	73.4	21.2	28.2	2,393.4

(a) NSW data is as at 16 May 1993. (b) Excludes motor cycles, plant and equipment, caravans and trailers. (c) See paragraph 8 of the Explanatory Notes. (d) Articulated trucks for Tasmania are included with rigid trucks.

EXPLANATORY NOTES

Introduction

This publication contains detailed information regarding registrations of new motor vehicles and includes particulars of passenger vehicles by make and selected models; light commercial vehicles and buses classified by make and tare; rigid and articulated trucks by make and gross vehicle mass/gross combination mass; and non-freight carrying trucks and motor cycles by make. Also included are registrations of new plant and equipment, caravans and trailers; registrations of new motor vehicles (including motor cycles) classified by fuel type; and particulars of motor vehicles on register. The ABS publishes preliminary figures on new motor vehicle registrations each month in *Registrations of New Motor Vehicles, Australia, Preliminary* (9301.0). (See Paragraph 24 — Related publications).

2. The statistics in this publication are based, from December 1990 onwards, on new processing procedures using the new Vehicle Identification Number (VIN) adopted by the motor vehicle registration authorities. The VIN system allows more accurate classification of vehicles. As a result, data processed on this system are not strictly comparable with those processed on the old system, for some States.

Scope and coverage

3. Motor vehicle registration statistics are obtained from data made available by the various State and Territory motor vehicle registration authorities and reflect the information as recorded in registration documents.

4. In these statistics *registrations* mean registrations processed by the motor vehicle registration authorities in the States and Territories during the period. In New South Wales, Victoria, South Australia, Western Australia, Tasmania, Northern Territory and the Australian Capital Territory the figures shown depart little from actual registrations during the period. In Queensland, advice of some registrations is often not received by the central motor vehicle registration authority until some time after the actual date of registration. For this reason a considerable number of registrations processed in a month actually relate to vehicles registered prior to that month.

5. The amount of data that can be published, particularly at the Australian level, is restricted to what is available from all motor vehicle registration authorities. For example, details of cubic capacity are not recorded in all States and, consequently, classification of vehicles according to engine size is not possible.

6. The statistics include vehicles with diplomatic and consular plates and State and Commonwealth Government owned vehicles other than those belonging to the defence services.

7. Recreation vehicles such as trail bikes and sand dune buggies intended for use in public places are required to be registered in Victoria and Queensland. Particulars of these registrations are regarded as outside the scope of new motor vehicle registration statistics.

8. Vehicles such as tractors (particularly the agricultural types), plant and equipment, and motor vehicles used solely on farms, in mines or in National Parks, etc., and not used on public roads are not required to be registered and these are also excluded from the statistics. Tractors required to be registered are included with plant and equipment.

Vehicle Identification Number

9. The Vehicle Identification Number (VIN) uniquely identifies each vehicle. Embedded within this number are details of make and model together with other relevant information concerning the vehicle. The VIN is now collected by the various motor vehicle registration authorities at the time each new vehicle is registered. The VIN is passed on to the Australian Bureau of Statistics (ABS) as part of the New Motor Vehicles Registrations record.

Vehicle Classification

10. The decoding of the VIN has resulted in better identification of each vehicle's bodycode and consequently classification of vehicles to particular categories. Vehicles such as minibuses which, in the old system, had been classified to cars and station wagons in some States but to buses in other States, are now consistently classified. Similarly, in the old system utilities and cab-chassis, which were sometimes classified to small trucks, are now consistently classified to light commercial vehicles. In addition, duplicate records, out of scope vehicles and those vehicles not registered for the first time can now be more accurately identified and therefore excluded from the statistics.

Vehicle Type Definitions

11. *Passenger Vehicles.* Vehicles constructed primarily for the carriage of less than 10 passengers (including the driver). Included are cars, station wagons, 4WD passenger vehicles and forward control passenger vehicles.

12. *Light Commercial Vehicles.* Vehicles constructed primarily for the carriage of goods and weighing less than 3.5 tonnes gross vehicle mass (GVM). Included are utilities, panel vans, cab-chassis and forward control vehicles (whether 4WD or not).

13. *Rigid Trucks.* Vehicles constructed primarily for load carrying with a gross vehicle mass (GVM) of 3.5 tonnes or more. Included are normal rigid trucks with a tow bar, draw bar or other non-articulated coupling on the rear for use with a trailer or dolly.

14. *Articulated Trucks.* Vehicles constructed primarily for load carrying consisting of a prime mover having no significant load carrying area but with a turn table device which can be linked to a trailer. With or without a trailer the gross combination mass (GCM) will be 3.5 tonnes or more.

15. *Non-freight Carrying Trucks.* Includes specialist vehicles such as ambulances or mobile cranes or vehicles fitted with special purpose equipment and having no goods carrying capacity.

16. *Omnibuses.* Includes all passenger vehicles having more than nine seats, including the driver.

Seasonal adjustment

17. Original and seasonally adjusted registrations of new motor vehicles are shown in Tables 1 and 3. Seasonally adjusted series are calculated for each State and Territory for the series "Passenger vehicles", "Other vehicles" and "Total vehicles". The component State/Territory "Passenger vehicles" and "Other vehicles" seasonally adjusted figures are summed to derive the Australian figures and the two resultant figures are summed to obtain Australian seasonally adjusted "Total vehicles".

18. Extreme care should be exercised in using the seasonally adjusted series for the number of new motor vehicle registrations in Tasmania, the Northern Territory and the Australian Capital Territory. The small numbers and volatile nature of these data makes reliable estimation of the seasonal pattern very difficult.

19. Seasonal adjustment may be carried out by various methods and the results may vary slightly according to the procedure adopted. Accordingly, seasonally adjusted statistics should not be regarded as in any way definitive. In interpreting particular seasonally adjusted statistics it is important to bear in mind the methods by which they have been derived and the limitations to which the methods used are subject.

20. Seasonal adjustment is a means of removing the estimated effects of normal seasonal variation from the series so that the effects of other influences on the series may be more clearly recognised. Seasonal adjustment procedures do not aim to remove the irregular or nonseasonal influences which may be present in any particular month, such as the effect of introducing new models, processing delays, or of industrial disputes. Irregular influences that are highly volatile can make it difficult to interpret the movement of the series even after adjustment for seasonal variation.

21. The seasonally adjusted series can, however, be smoothed to reduce the impact of the irregular component in the adjusted series. This smoothed seasonally adjusted series is called a trend estimate. Trend estimates of motor vehicle registration statistics for Australia are shown in Table 1 and State/Territory trend estimates are shown in Table 3. These trend estimates have been derived by ap-

plying a 13-term Henderson-weighted moving average to the seasonally adjusted series.

22. While this technique enables trend estimates for the latest period to be produced, it does result in revisions to the trend estimate for the most recent months as additional observations become available. There may also be revisions as a result of changes in the original data, and as a result of the re-estimation of the seasonal factors. Users may wish to refer to the ABS Information Papers *A Guide to Smoothing Time Series - Estimates of "Trend"* (1316.0) and *Time Series Decomposition - An Overview* (1317.0) for more detailed information on smoothing of seasonally adjusted time series data.

Classification by area

23. In all States, *capital city* registrations refer to vehicles for which the address of the registered owner is located within the capital city statistical division. These statistical divisions are re-defined from time to time usually as the result of information available from periodic censuses of population and housing. All registrations in the Australian Capital Territory are included under 'Capital cities' while those in the Northern Territory are included under 'Other areas'.

Related publications

24. Users may also wish to refer to the following motor vehicle registration publications which are available on request:

Registrations of New Motor Vehicles, Australia, Preliminary (9301.0) — issued monthly.

Motor Vehicle Registrations, Australia, 1991-92 (9304.0) — issued annually.

Motor Vehicle Census, Australia, 30 September 1991 (9309.0) — issued triennially.

TranStats (9312.0) — issued irregularly.

25. Current publications produced by the ABS are listed in the Catalogue of Publications and Products, Australia (1101.0). The ABS also issues, on Tuesdays and Fridays, a Publications Advice (1105.0) which lists publications to be released in the next few days. The Catalogue and Publications Advice are available from any ABS office.

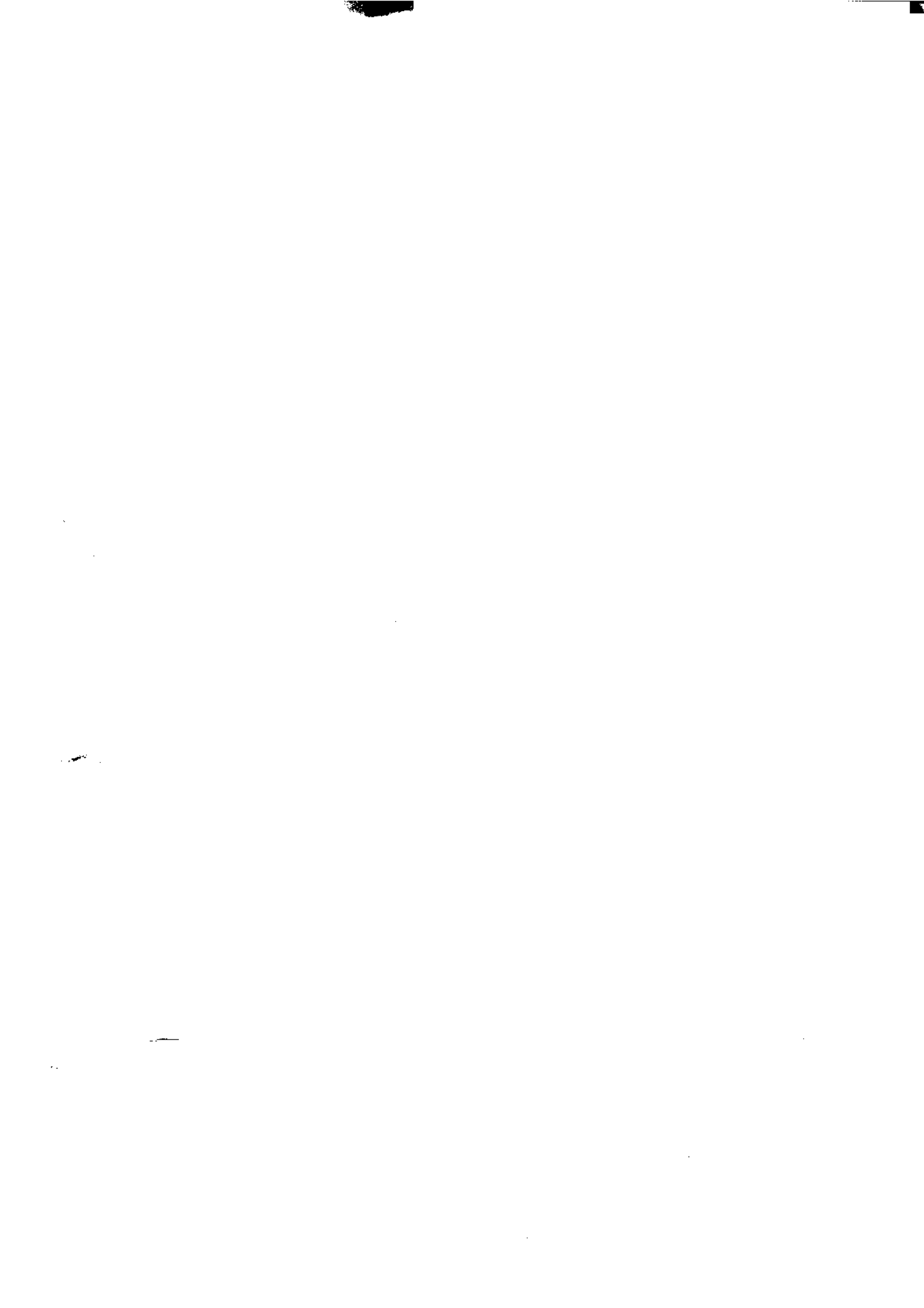
Symbols and other usages

n.a. not available
— nil or rounded to zero
.. not applicable

26. Where figures have been rounded, discrepancies may occur between sums of the component items and totals.

IAN CASTLES
Australian Statistician







For more information...

— on Foreign Trade services —

A wide range of standard and customised Foreign Trade data services is available on computer printout, floppy disk, microfiche, magnetic tape or via electronic mail. Telephone (06) 252 5400 for further information.

— on other services —

The ABS also publishes a wide range of other information on Australia's economic and social conditions. A catalogue of publications and products is available from any of our Offices (see below for contact details).

Information Consultancy Service

Information tailored to special needs of clients can be obtained from the Information Consultancy Service available at ABS Offices (see Information Inquiries below for contact details).

National Dial-a-Statistic Line

0055 86 400

Steadycom P/L: premium rate 25c/21.4 secs.

This number gives 24-hour access, 365 days a year for a range of statistics.

Electronic Data Services

Selections of most frequently requested statistics are available, updated daily, on DISCOVERY (Key *656#). For more details on electronic data services available, contact Information Services in any of the ABS Offices (see Information Inquiries below for contact details).

Bookshops and Subscriptions

There are over 400 titles of various publications available from ABS bookshops in all ABS Offices (see below Bookshop Sales for contact details). The ABS also provides a subscription service through which nominated publications are provided by mail on a regular basis at no additional cost (telephone Publications Subscription Service toll free on 008 02 0608 Australia wide).

Sales and Inquiries

Regional Offices	Information Inquiries	Bookshop Sales
SYDNEY (02)	268 4611	268 4620
MELBOURNE (03)	615 7000	615 7829
BRISBANE (07)	222 6351	222 6350
PERTH (09)	323 5140	323 5307
ADELAIDE (08)	237 7100	237 7582
HOBART (002)	20 5800	20 5800
CANBERRA (06)	207 0326	207 0326
DARWIN (089)	43 2111	43 2111
National Office		
ACT (06)	252 6007	008 020 608

ABS Email Addresses

Keylink	STAT.IFO/ABS
X.400	(C:AU,A:TELEMEMO.O:ABS,SN:INFO,FN:STAT)
Internet	STAT.INFO@ABS. TELEMEMO.AU



Information Services, ABS, PO Box 10, Belconnen ACT 2616



2930300001941